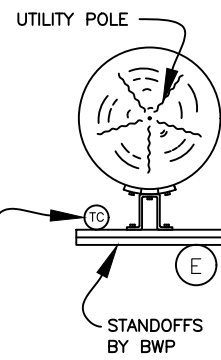


ALL NEW RESIDENTIAL UNDERGROUND INSTALLATIONS REQUIRE A PRE-CONSTRUCTION MEETING WITH THE BWP ELECTRIC SERVICE PLANNER TO DETERMINE CONDUIT ROUTING AND PULLBOX LOCATION. CONTACT THE SERVICE PLANNER TO SCHEDULE THE MEETING AND FOR ALL FURTHER UNDERGROUND INSPECTIONS.

ALL CONDUIT MUST BE INSPECTED AND APPROVED BY THE RESIDENTIAL SERVICE PLANNER PRIOR TO COVERING. THESE INSPECTIONS ARE INDEPENDANT OF AND SEPARATE FROM ANY INSPECTION THAT MAY BE REQUIRED BY THE BURBANK BUILDING DIVISION AND/OR PUBLIC WORKS DEPARTMENT.

NO CATV OR TELECOMMUNICATION CONDUITS ARE TO BE PLACED INTO BWP PULL BOX.
ALSO REFER TO RELATED BWP UNDERGROUND STANDARDS, LATEST REVISION:
 DWG S-810 RESIDENTIAL PULL BOX REQUIREMENTS
 DWG S-811 RESIDENTIAL DIRECT BURY SEPARATION
 DWG S-713 SECONDARY RISER DETAIL



OK TO RUN COMMUNICATION CONDUIT ON BACKSIDE OF BWP STANDOFFS (KEEP MAXIMUM SEPARATION TO ELECTRIC) OR DIRECTLY ON POLE (SAME SIDE OF POLE AS ELECTRIC RISER - DO NOT OBSTRUCT POLE CLIMBING SPACE). CONSULT WITH COMMUNICATION PROVIDER REGARDING SPECIFIC REQUIREMENTS. SEE BWP DRAWING S-811 FOR UNDERGROUND SEPARATION REQUIREMENTS.

BWP TO PULL IN ONDUCTORS

PVC CONDUIT INSTALLED BY BWP

BWP WILL INSTALL STANDOFFS. DO NOT ATTACH TO POLE UNTIL BWP HAS COMPLETED ALL FIELD WORK.

_____ " DIA

CONTRACTOR RESPONSIBLE FOR FIRST 10' OF CONDUIT

PULL BOX BY CONTRACTOR 2'X3' INSIDE DIMENSIONS TO BE SET AT FINAL GRADE, SEE BWP DWG S-810

1/4" NYLON PULL CORD INSTALLED BY CONTRACTOR

SCH #80 PVC BY CONTRACTOR (GALVANIZED IF EXPOSED OR FRAME OUT AND ENCLOSE CONDUIT)

SCH #80 PVC BY CONTRACTOR (RISER AND FIRST BEND MUST BE GALVANIZED RIGID CONDUIT IF IN THE ALLEY OR NEAR VEHICLE TRAFFIC)

10'-0"

12" DEEP PEA GRAVEL UNDER PULL BOX SUPPORTED BY 12" PULLBOX EXTENSION, OR EQUIVALENT

8" BELOW BOTTOM OF LID
 6" ABOVE GRAVEL

_____ " DIAMETER

2'-0" MIN. ON PRIVATE PROPERTY

SCH #80 PVC BY CONTRACTOR
 SCH #80 PVC ON ALL BENDS

SCH #40 PVC BY CONTRACTOR

SCH #80 PVC BY CONTRACTOR

MAXIMUM OF (3) 90° BENDS IN 100' CONTINUOUS RUN. BENDS MUST BE MINIMUM 3' RADIUS.

No.	REVISIONS	BY	APPR'V'D	DATE
C	STANDARDIZED FORMATTING	MEP	CJC	5/9/23
B	ADD NOTES / NEW DWGS	SK	RS	8/25/17
A	ADD NOTES / DIMENSIONS	SRA	DSL	6/24/13



BURBANK WATER AND POWER - ELECTRIC SERVICES

RESIDENTIAL UNDERGROUND SERVICE

DRAWING No. S-707C

Sheet 1 of 1